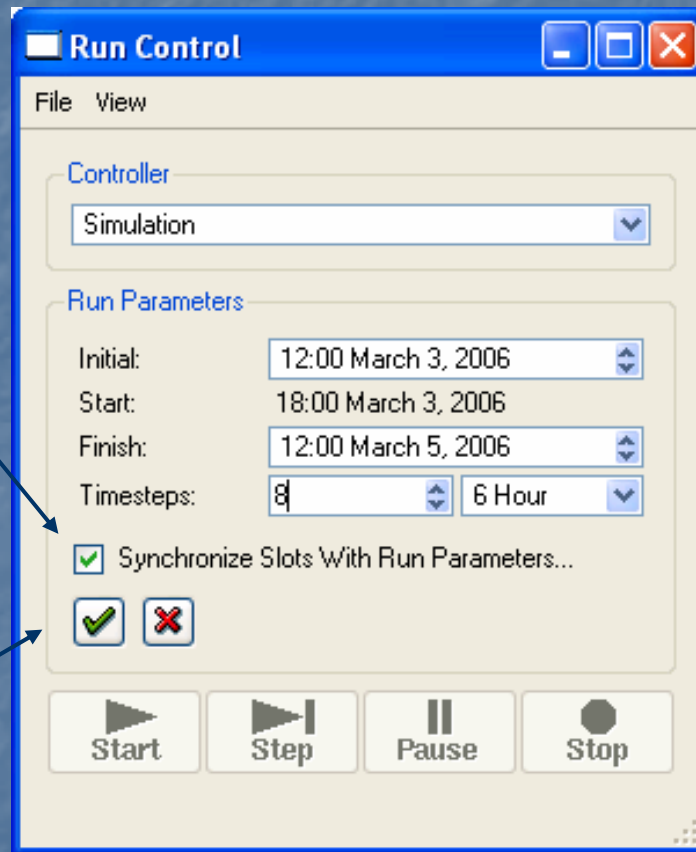


Run Control Enhancements

- Perform multiple run parameter edits then apply or cancel
- Synchronize slots with the run parameters

Run Control Enhancements

Synchronize slots
with the run
parameters



Apply or cancel
the run parameter
edits

Run Control Enhancements

Resize simulation slots,
encompassing the run parameters

Resize accounting slots, either
synchronized with simulation slots
or encompassing the run parameters

Synchronize Slots

Simulation Slots

Resize Simulation Slots

Start: 12:00 March 3, 2006

End: 12:00 March 5, 2006

Timesteps: 8 6 Hour

Accounting Slots

Synchronize With Simulation Slots

Resize Accounting Slots

Begin: 12:00 March 3, 2006

End: 12:00 March 5, 2006

Timesteps: 8 6 Hour

OK Cancel

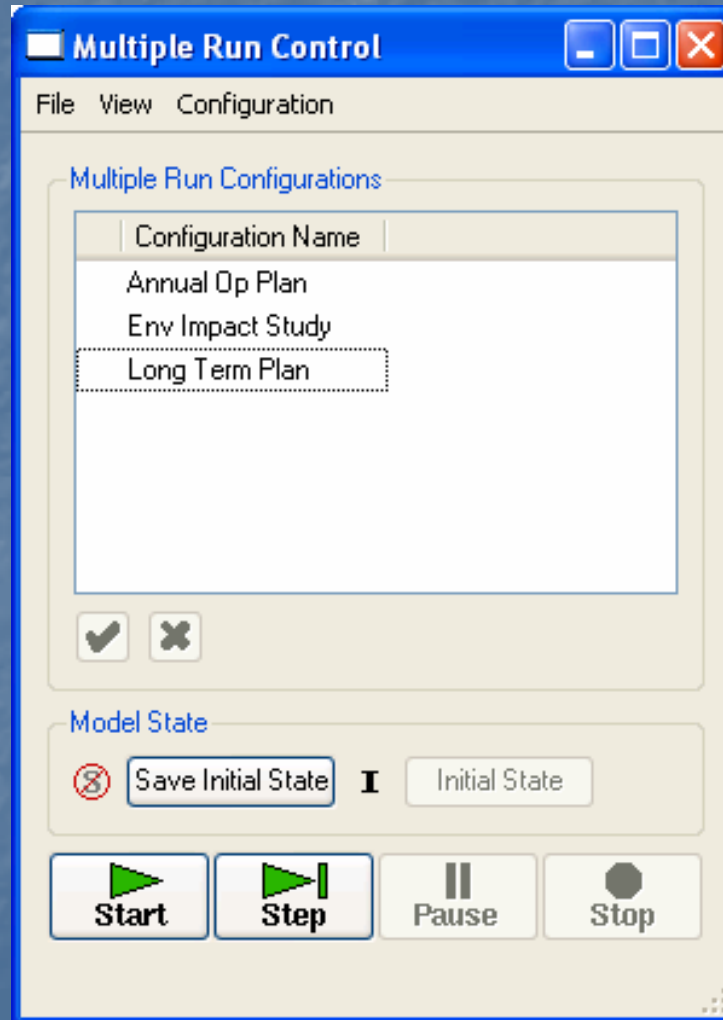
Multiple Run Management Enhancements

- Multiple named configurations
- Fully portable MRM configurations (using environment variables)
- Output to multiple RDF files using control file "file=..." keyword
- Default output file for control file entries without "file=..." keyword
- Per-run output DMI

Multiple Run Management Enhancements (cont.)

- Input and Output DMIs passed trace number “-STrace=N” as last command line argument
- DMI repeat counts
- Index sequential / DMI modes “Combinations” and “Pairs”
- Better control of run list display

Multiple named configurations



Output

Control file with "file=..." keywords provides output to multiple RDF files

Select or enter file paths for control, data files

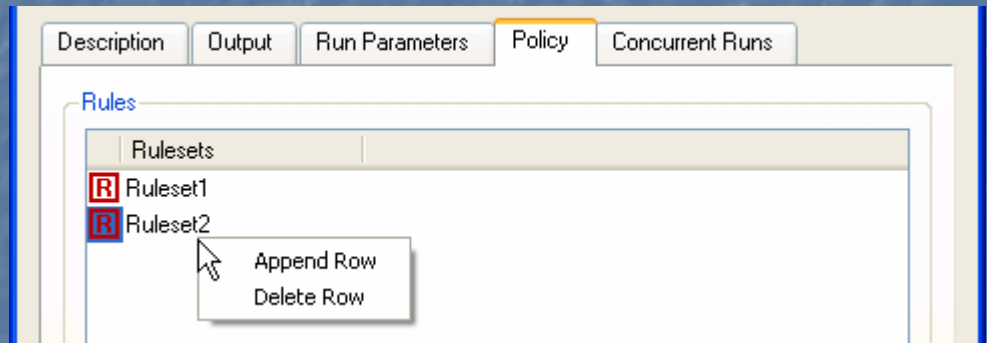
Default output file for control File entries without "file=..." keyword

The screenshot shows a dialog box with four tabs: 'Description', 'Output' (selected), 'Run Parameters', and 'Concurrent Runs'. The 'Output' tab contains three rows of input fields. The first row is 'Control File:' with the text '\$(ANNUAL_OP_MODEL)/output.ctl' and a folder icon to its right. The second row is 'Data File:' with an empty text box and a folder icon to its right. The third row is 'DMI:' with an empty text box and a database icon to its right. At the bottom of the dialog are four buttons: 'OK', 'Apply', 'Reset', and 'Cancel'.

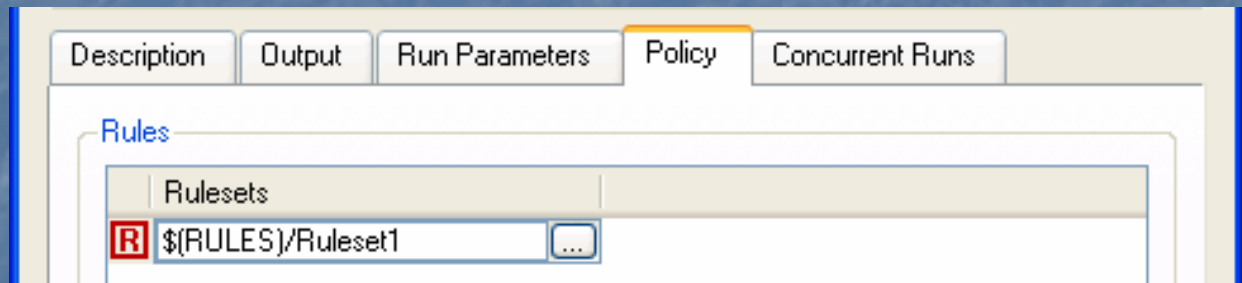
Per-run output DMI

Policy (rules and constraints)

Add and delete rules and constraints with context menu

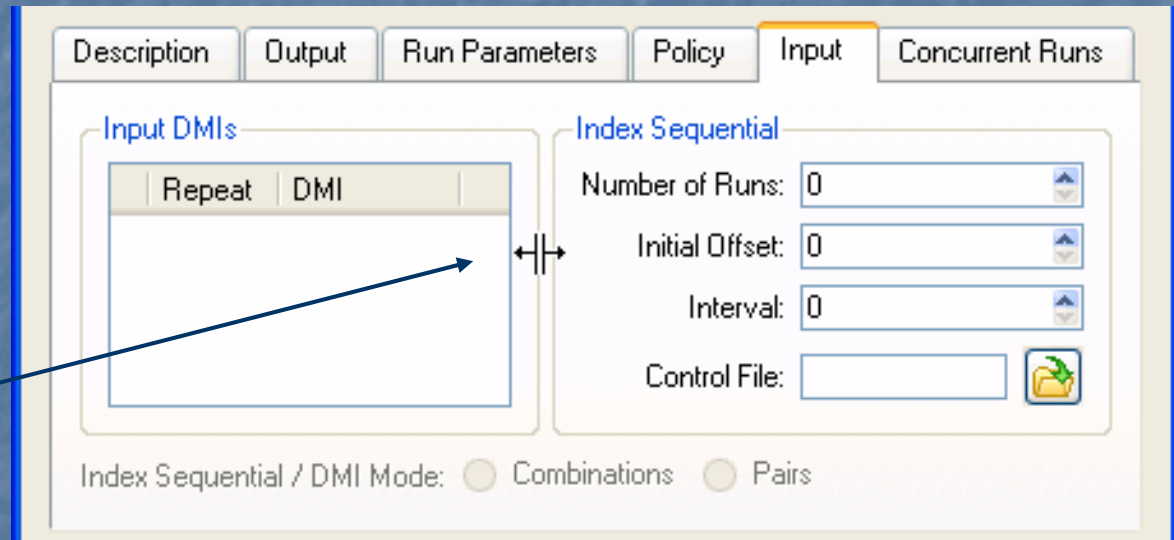


Select or enter file paths for rules, constraints files

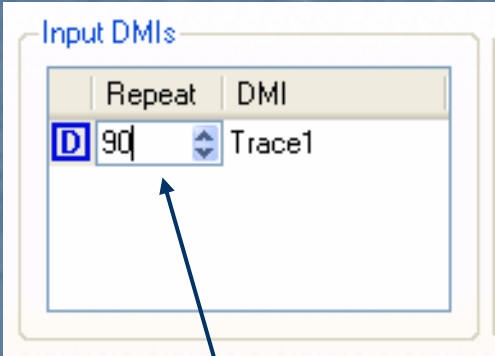
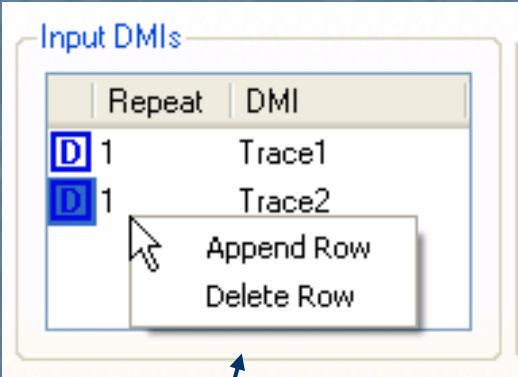


Input (DMIs and index sequential)

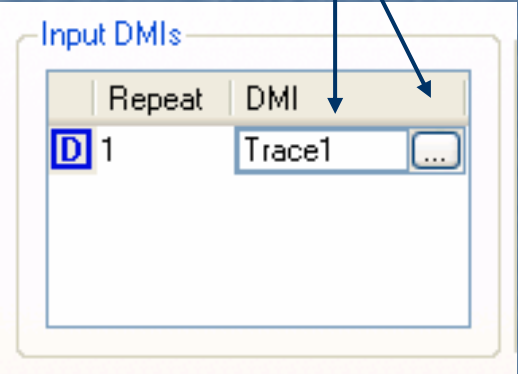
Two "halves"
with slider
for resizing
or hiding



Input (DMIs)



Select or enter
DMI



Add and delete
DMIs with
context menu

Enter DMI
repeat count

Input (index sequential)


Select or enter
index sequential
control file

Index Sequential

Number of Runs:

Initial Offset:

Interval:

Control File: 

New index sequential
modes "Combinations"
and "Pairs"

Index Sequential / DMI Mode: Combinations Pairs

Run list

Better control of run list – hide and show index sequential and details

The screenshot shows a software window with a tabbed interface. The 'Concurrent Runs' tab is active. Below the tabs, there are two checked checkboxes: 'Show Index Sequential' and 'Show Detail'. Below these is a table with the following data:

Run	Input DMI	Policy	Index Seq.
1	D Trace1	R \${RULES}/Ruleset1	IS Backup, off = 0, tot = 0
2	D Trace1	R \${RULES}/Ruleset1	IS int = 0, tot = 0
3	D Trace1	R \${RULES}/Ruleset1	IS int = 0, tot = 0
4	D Trace1	R \${RULES}/Ruleset1	IS int = 0, tot = 0
5	D Trace1	R \${RULES}/Ruleset1	IS int = 0, tot = 0